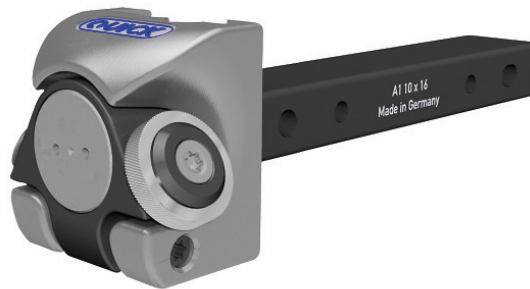


# A1 / FL QUICK CUT KNURLING TOOLS

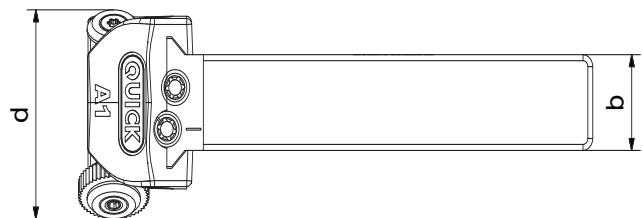
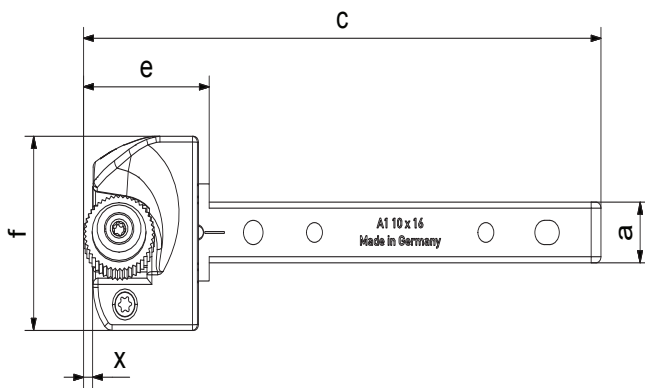
A1 tools are compatible with all current conventional and CNC-controlled lathes.



MODEL	PROD.-NO.	WORKPIECE Ø	KNURLING WHEEL mm (Ø x width x bore)
A1/FL 10x16	P669-0203	3 - 50 mm	14,5 x 3 x 5* (271)
A1/FL 12x16	P669-0204	3 - 50 mm	14,5 x 3 x 5* (271)
A1/FL 16x16	P669-0205	3 - 50 mm	14,5 x 3 x 5* (271)

a	b	c	d	e	f	x
10	16	106	35	25,6	32	1,8
12	16	106	35	25,6	32	1,8
16	16	106	35	25,6	32	1,8



\*DETAILS ABOUT KNURLING WHEELS (WHEEL PITCHES, TOOTH ANGLE ETC.) ARE LISTED ON PAGE 39.





RIGHT-HAND TOOL SHOWN

CUTTING SPEED AND FEED RATE INFORMATION, PAGE 43:



## RAA (Straight):

-  Right-hand tool 1 x 30°R knurling wheel (cutting)
-  Left-hand tool 1 x 30°L knurling wheel (cutting)

## RBR (Spiral):

-  Right-hand tool 15° spiral 1 x 15°R knurling wheel (cutting)
-  30° spiral 1 x 90° knurling wheel (cutting) (AA)

## RBL (Spiral):

-  Left-hand tool 15° spiral 1 x 15°L knurling wheel (cutting)
-  30° spiral 1 x 90° knurling wheel (cutting) (AA)

