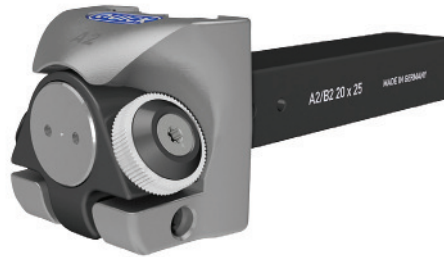


# A2 / FL QUICK CUT KNURLING TOOLS

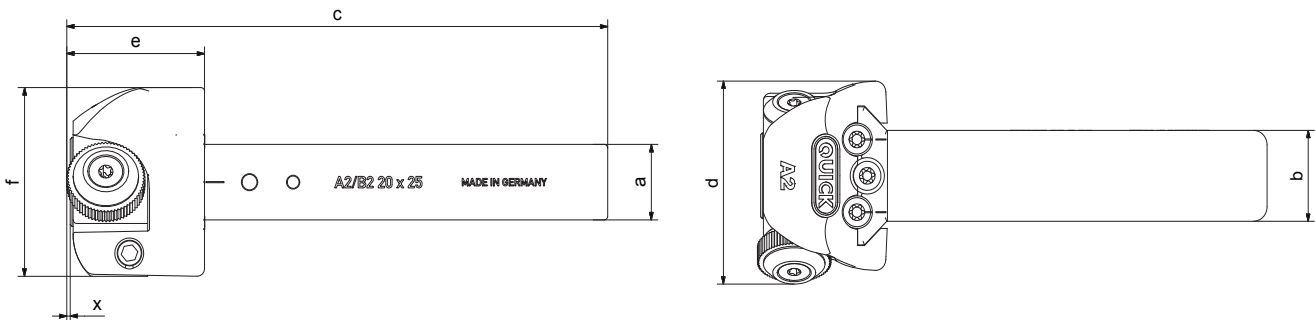
A2 tools are compatible with all current conventional and CNC-controlled lathes.



MODEL	PROD.-NO.	WORKPIECE $\varnothing$	KNURLING WHEEL mm ( $\varnothing$ x width x bore)
A2/FL 20x25	P669-0212	5 - 250 mm	21,5 x 5 x 8* (272)
A2/FL 25x25	P669-0213	5 - 250 mm	21,5 x 5 x 8* (272)

a	b	c	d	e	f	x
20	25	149	55,8	37,9	50	1
25	25	149	55,8	37,9	50	1

\*DETAILS ABOUT KNURLING WHEELS (WHEEL PITCHES, TOOTH ANGLE ETC.) ARE LISTED ON PAGE 39.



RIGHT-HAND TOOL SHOWN  
CUTTING SPEED AND FEED RATE INFORMATION, PAGE 43:

## RAA (Straight):

- Right-hand tool 1 x 30°R knurling wheel (cutting)
- Left-hand tool 1 x 30°L knurling wheel (cutting)

## RBR (Spiral):

- Right-hand tool 15° spiral 1 x 15°R knurling wheel (cutting)  
30° spiral 1 x 90° knurling wheel (cutting) (AA)

## RBL (Spiral):

- Left-hand tool 15° spiral 1 x 15°L knurling wheel (cutting)  
30° spiral 1 x 90° knurling wheel (cutting) (AA)

