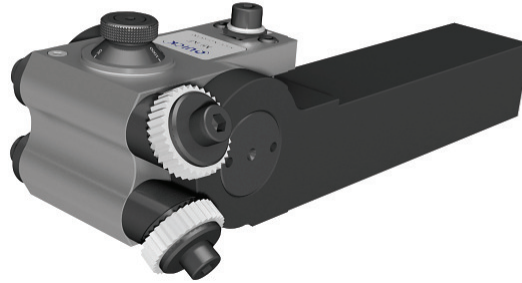


MAMMUT I / KF

QUICK CUT KNURLING TOOLS

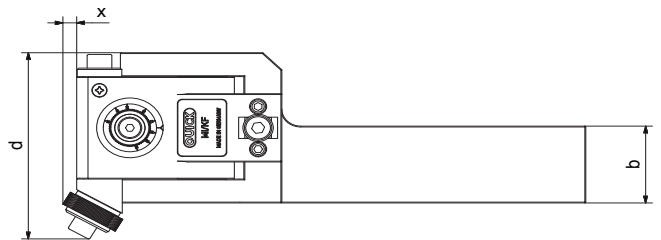
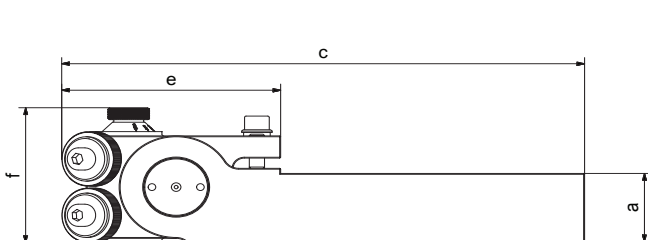
This tool is designed for use with manual and CNC-controlled toolmaker lathes, centre lathes and roll turning lathes.
It can be used to make larger diameter cross and diamond knurls.



MODEL	PROD.-NO.	WORKPIECE \varnothing	KNURLING WHEEL mm (\varnothing x width x bore)
MI/KF	P218-0200	20 - 1000 mm	32x8x14* (273)

a	b	c	d	e	f	x
40	45	275,5	109	115,5	79	7

*DETAILS ABOUT KNURLING WHEELS (WHEEL PITCHES, TOOTH ANGLE ETC.) ARE LISTED ON PAGE 39.



CUTTING SPEED AND FEED RATE INFORMATION, PAGE 43:

RGE45° (Cross):



1 x 15°R knurling wheel (cutting)
1 x 15°L knurling wheel (cutting)

RGE30° (Diamond):



2 x 90° knurling wheels (cutting) (AA)

